



**27 Matthew Circuit Mardi NSW**

4 2 2

Immaculately maintained, this spacious single-storey home enjoys an ideal location, a comfortable floor plan and a level backyard that will appeal to both the home buyer and investor.

Located within a short drive to Westfield Shopping Centre, Tuggerah Train Station and the M1 Motorway, this delightful home offers 4 bedrooms all with built in robes, master with walk-in robe & ensuite.

The generous living spaces includes a spacious formal lounge at the front of the home as well as a combined family and dining room off the well-appointed kitchen. The kitchen itself offers stone bench tops with waterfall edges, soft close drawers, 900mm stainless steel cooking

**Type** : House  
**Price** : Auction  
**Land Size** : 558 sqm  
**View** : <http://www.coastwidefn.com.au/sale/nsw/central-coast-region/mardi/residential/house/8104988>



**David Manuelle**  
02 4353 1999



**Adrian Simpson**  
02 4353 1999

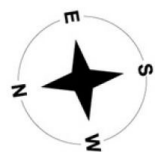
[For full version visit the website](#)

<http://www.coastwidefn.com.au>

We sell, rent and manage Real Estate, Residential, Lifestyle and Commercial across the Central Coast



# 27 Matthew Circuit, Mardi

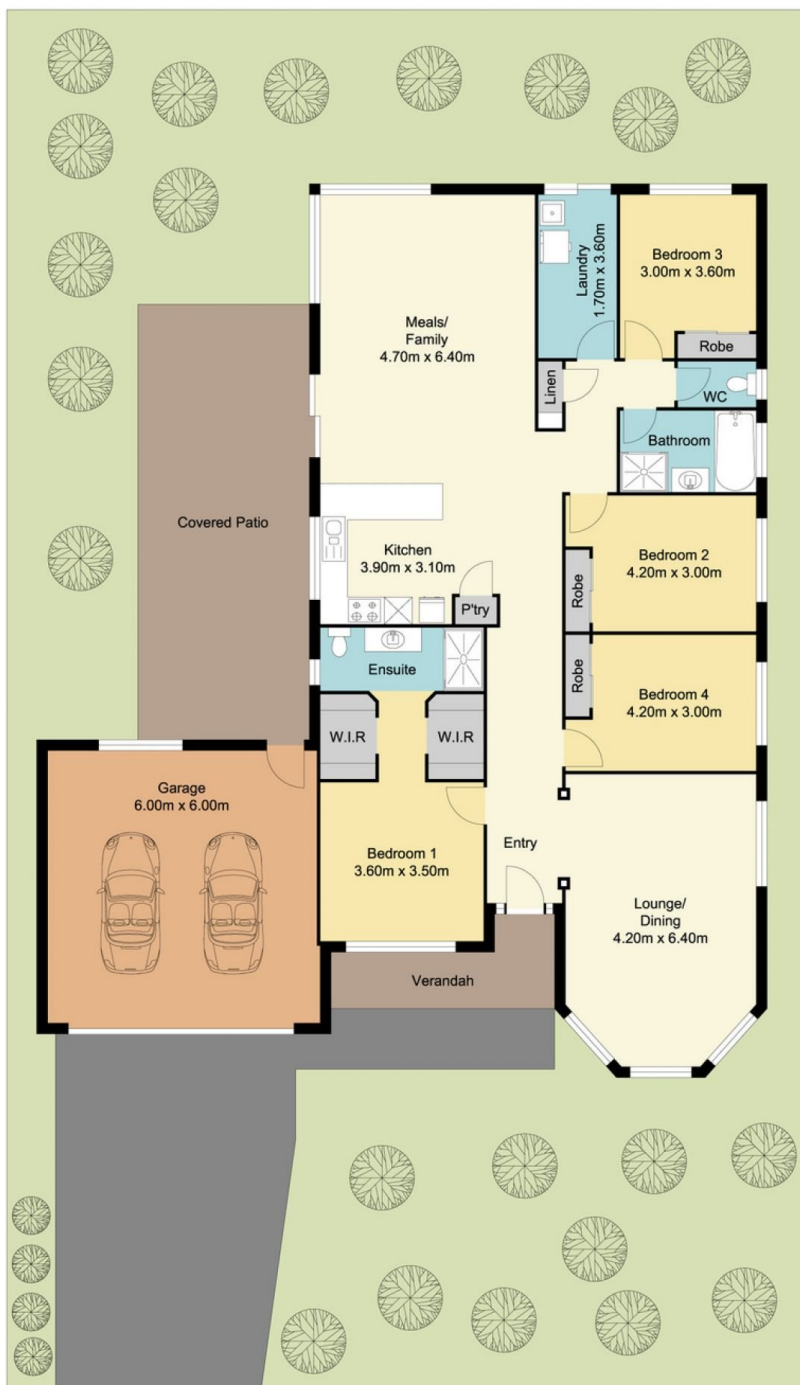


Total Approx Floor Area 202.21 sq.m

Measurements are approximate. Not to scale. For illustrative purposes only. Boundaries are approximate

# 27 Matthew Circuit, Mardi

## SITE PLAN



Total Approx Floor Area 202.21 sq.m

Measurements are approximate. Not to scale. For illustrative purposes only. Boundaries are approximate