



## 68 Braithwaite Road Tacoma NSW

3 1 1

Located within the popular and peaceful suburb of Tacoma and set on approximated 9 acres of land this property offers the opportunity to enjoy life in your own backyard with the potential to improve and grow.

The improvements include a neat brick and tile, 3 bedroom home with an attached garage.

The property is positioned in a quiet street within a family friendly, low traffic neighbourhood only a short walk from the well renowned Tacoma Primary School. Enjoy the peaceful outlook across your own large backyard and bushland.

The total land size is approximately 9 acres. The house

[For full version visit the website](http://www.coastwidefn.com.au)

**Type** : House  
**Price** : Guide \$799,000 - Room to Grow & Explore  
**Land Size** : 3.65 ha  
**View** : <http://www.coastwidefn.com.au/sale/nsw/central-coast-region/tacoma/residential/house/8136721>



**Adrian Simpson**  
02 4353 1999



**David Want**  
0402 810 831

<http://www.coastwidefn.com.au>

We sell, rent and manage Real Estate, Residential, Lifestyle and Commercial across the Central Coast

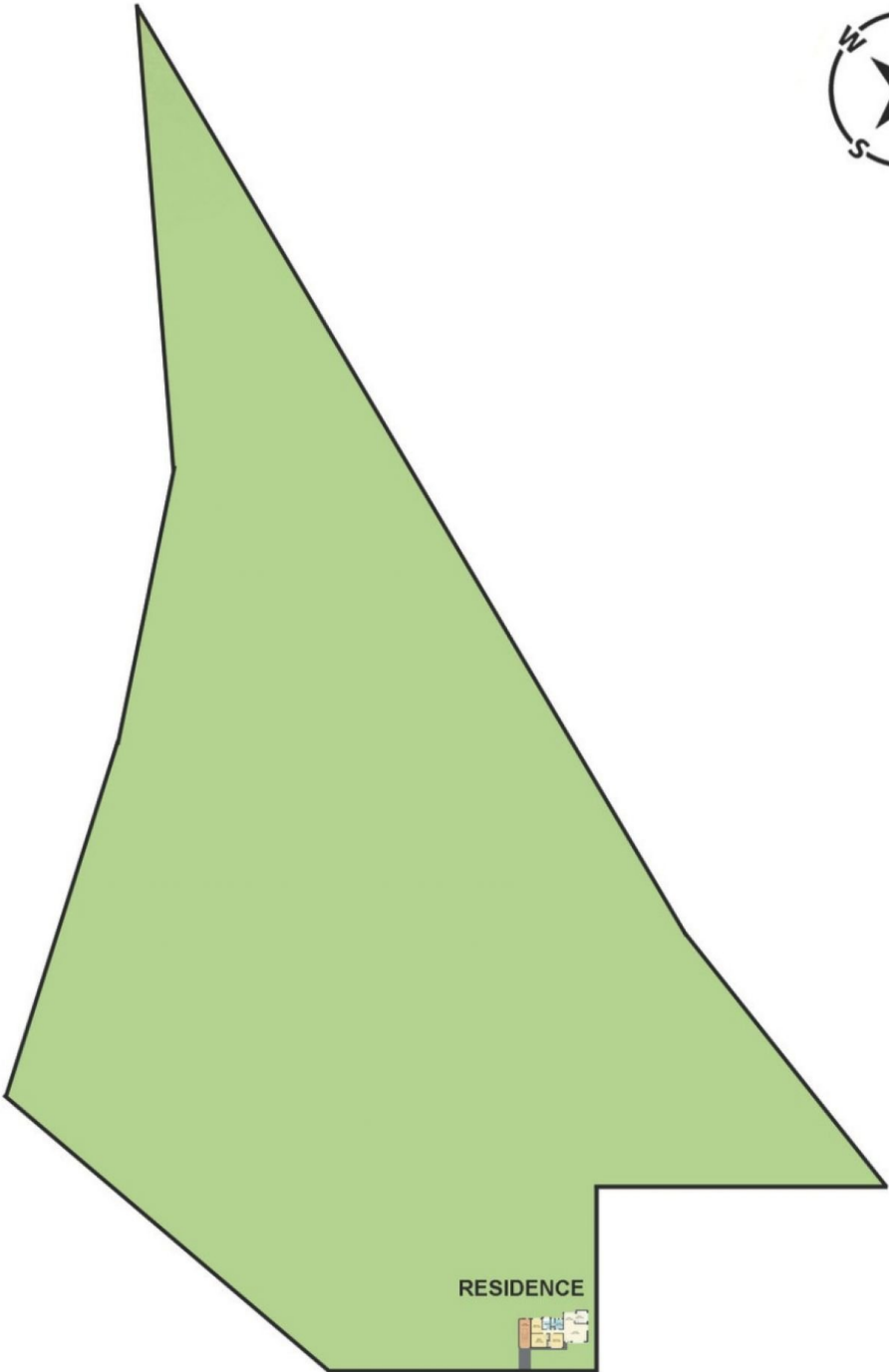
# 68 Braithwaite Road, Tacoma



Measurements are approximate. Not to scale. For illustrative purposes only. Boundaries are approximate

# 68 Braithwaite Road, Tacoma

## SITE PLAN



BRAITHWAITE ROAD

Measurements are approximate. Not to scale. For illustrative purposes only. Boundaries are approximate