

980 Hue Hue Road JILLIBY NSW

5 3 6

Located only a few minutes drive to the M1 Motorway this private acreage is the perfect rural setting and offers a single level homestead, set upon 27 sundrenched acres.

The colonial style home features 5 bedrooms with ensuites to both the main and the 5th bedroom which would also make a great home office or studio. A large sundrenched family room enjoys stunning property views and opens onto a large entertaining deck. The ample living space includes a formal lounge & dining plus a 3rd lounge or rumpus. The home comes complete with air conditioning, double combustion fireplace, alarm, double garage plus a large machinery shed with workshop.

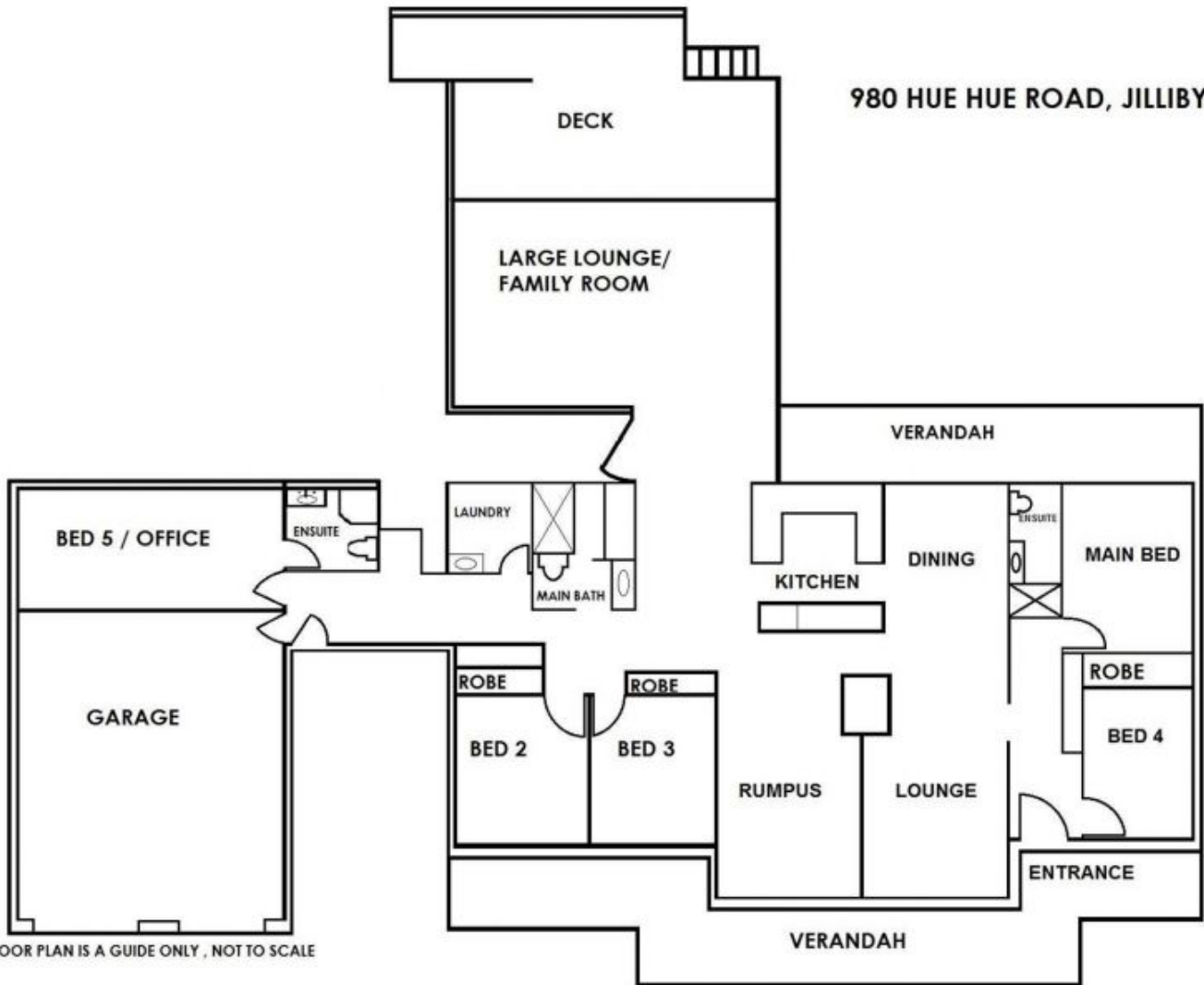
The land features fully fenced paddocks, 4 dams and a fantastic outlook with no visible neighbours.

Price : \$ 820,000
Land Size : 109265 sqm
View : <https://www.coastwidefn.com.au/sale/nsw/central-coast-region/jilliby/residential/acreage-semirural/5623314>



Adrian Simpson
02 4353 1999

980 HUE HUE ROAD, JILLIBY



FLOOR PLAN IS A GUIDE ONLY , NOT TO SCALE