






95 Clydesdale Street WADALBA NSW

4  2  2 

Enjoying a picturesque outlook, located opposite a peaceful nature reserve this great quality family home features 4 large bedrooms all with robes and an ensuite to the main. The ample living space combines separate sundrenched lounge and dining rooms, a large open kitchen/meals/family room as well as an upstairs lounge. A detached double garage with drive thru access and a fully fenced yard ensure that there is plenty of room here for the growing family.

Positioned in a charming estate amongst other quality homes, this growing area offers plenty of open space and is only a short drive to local schools, shopping centres, M1 motorway access and the famous lakes and beaches that the Central Coast has to offer.

Price : \$ 525,000
Land Size : 486 sqm
View : <https://www.coastwidefn.com.au/sale/nsw/central-coast-region/wadalba/residential/house/5623340>



Adrian Simpson
02 4353 1999

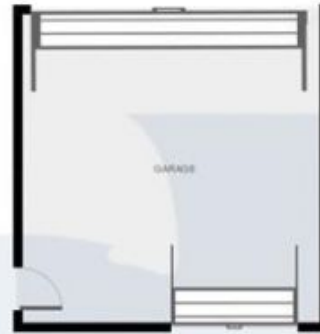


David Manuelle
02 4353 1999

<https://www.coastwidefn.com.au>

We sell, rent and manage Real Estate, Residential, Lifestyle and Commercial across the Central Coast

Ground Floor



1st Floor



THIS FLOORPLAN IS PROVIDED AS A GUIDE ONLY WITHOUT WARRANTY OF ANY KIND. COASTWIDE FIRST NATIONAL DISCLAIMS ANY WARRANTY INCLUDING, WITHOUT LIMITATION, SATISFACTORY QUALITY OR ACCURACY OF DIMENSIONS.