



2/20 Brickendon Avenue MARDI NSW

3 1 1

Beautifully presented inside and out, this fantastic home features 3 bedrooms, 2 with built-in robes, open plan lounge and dining rooms which flows onto the galley kitchen, a functional main bathroom, single lock-up garage and private manicured yard with gazebo.

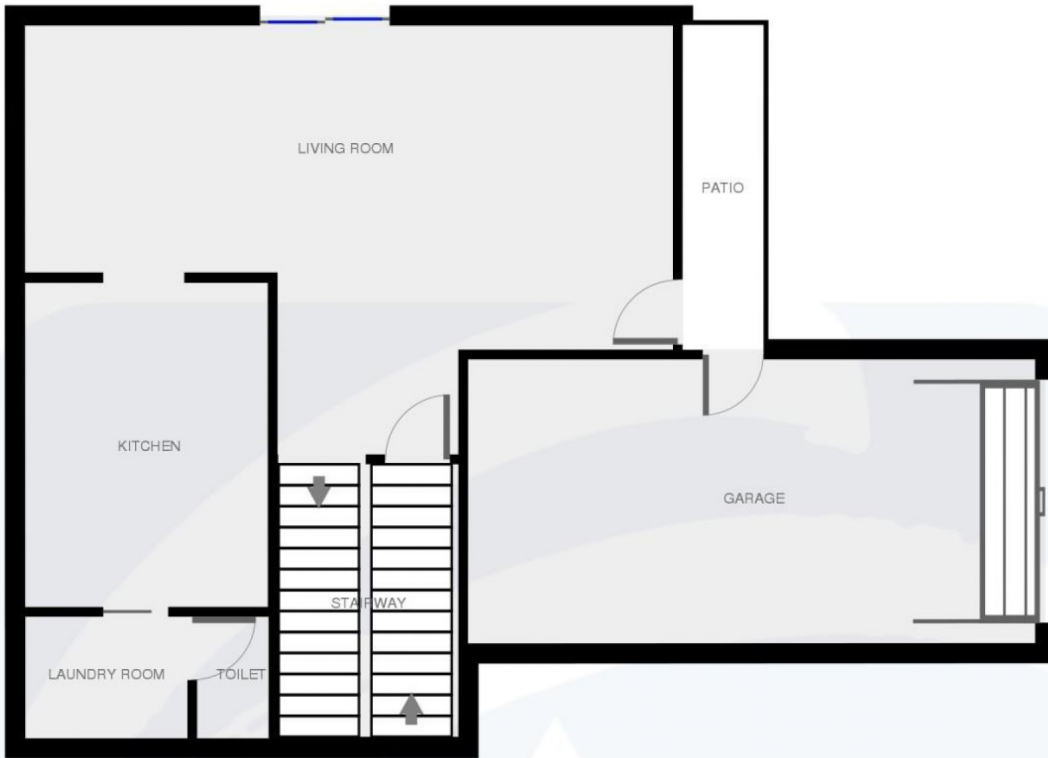
Price : \$ 428,000
Land Size : 273 sqm
View : <https://www.coastwidefn.com.au/sale/nsw/central-coast-region/mardi/residential/house/5623528>

Located within 5 minutes to Westfield Shopping Centre, the M1/F3 Freeway and Tuggerah Station plus the additional advantage of a community pool, tennis court & parklands, this delightful home has plenty to offer the homebuyer and investor.

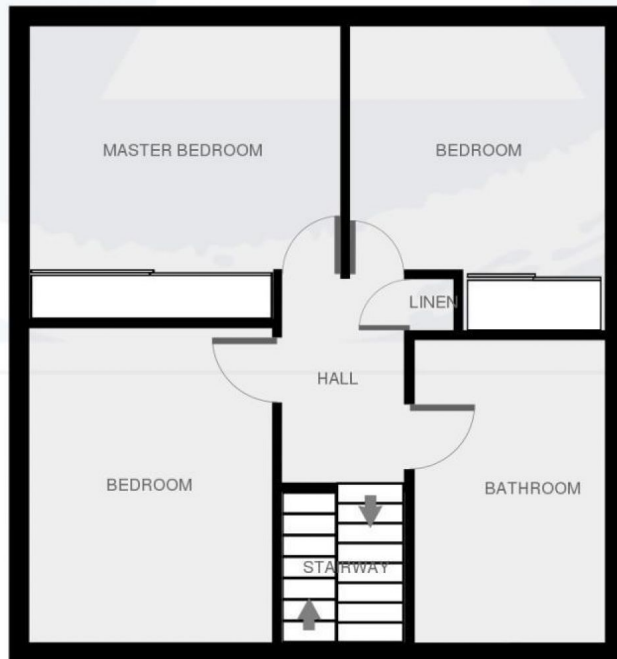


David Manuelle
02 4353 1999

Ground Floor



1st Floor



This plan is provided as a guide only and we make no guarantees as to the accuracy of the plan.