



**320 Smiths Road DOORALONG NSW**

5 3 3

On a secluded parcel of land tucked away in the spectacular Dooralong Valley is this beautifully maintained 12 acre (approximately) property.

At the highest point of this acreage presents this wonderful opportunity to turn this 5 bedroom home into your rural oasis.

This 5 bed, 3 bath and 3 car home has large living quarters deemed suitable for the large family but also provides a sense of intimacy and warmth. The outdoor living space is uncapped for the entertainer or the green surrounding the home makes for a stunning outlook for your morning tea or coffee.

Ideal for horse enthusiasts with round yard, beautifully fenced paddocks and stables where no expense has been

**Land Size** : 48562.3 sqm  
**View** : <https://www.coastwidefn.com.au/sale/nsw/central-coast-region/dooralong/residential/acreagesemirural/5623540>



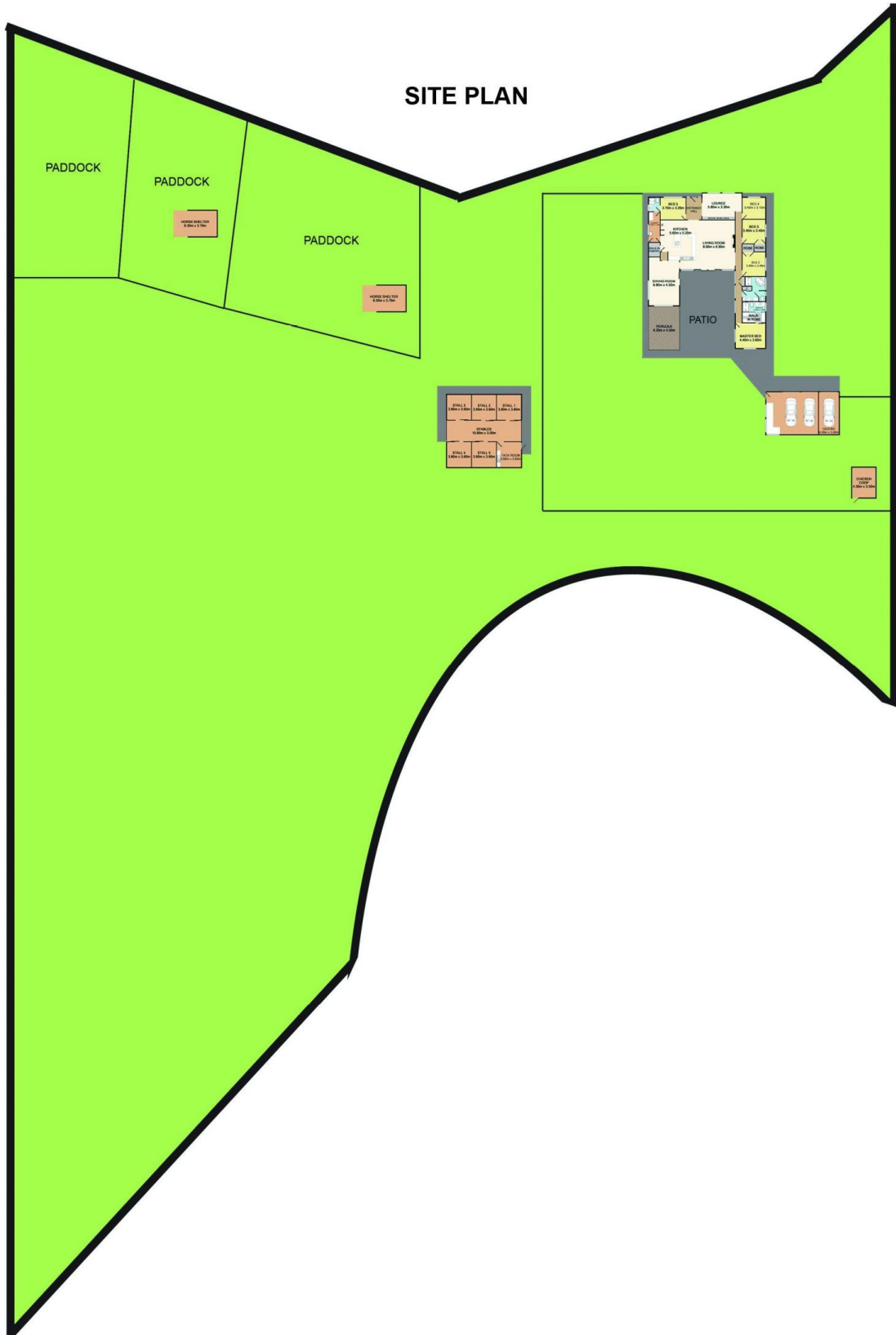
**Michael Eslick**  
**0402 810 831**

<https://www.coastwidefn.com.au>

We sell, rent and manage Real Estate, Residential, Lifestyle and Commercial across the Central Coast



# SITE PLAN



Measurements are approximate. Not to scale. For illustrative purposes only.

320 Smiths Road

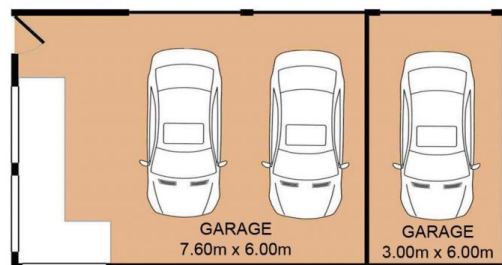
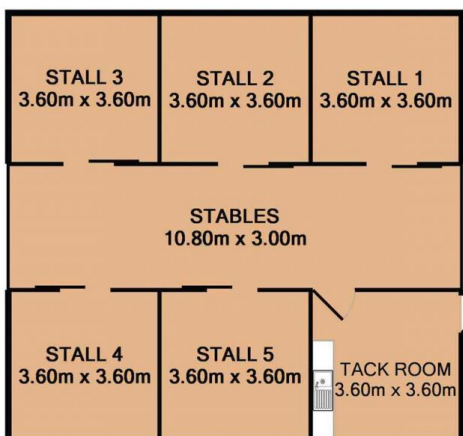
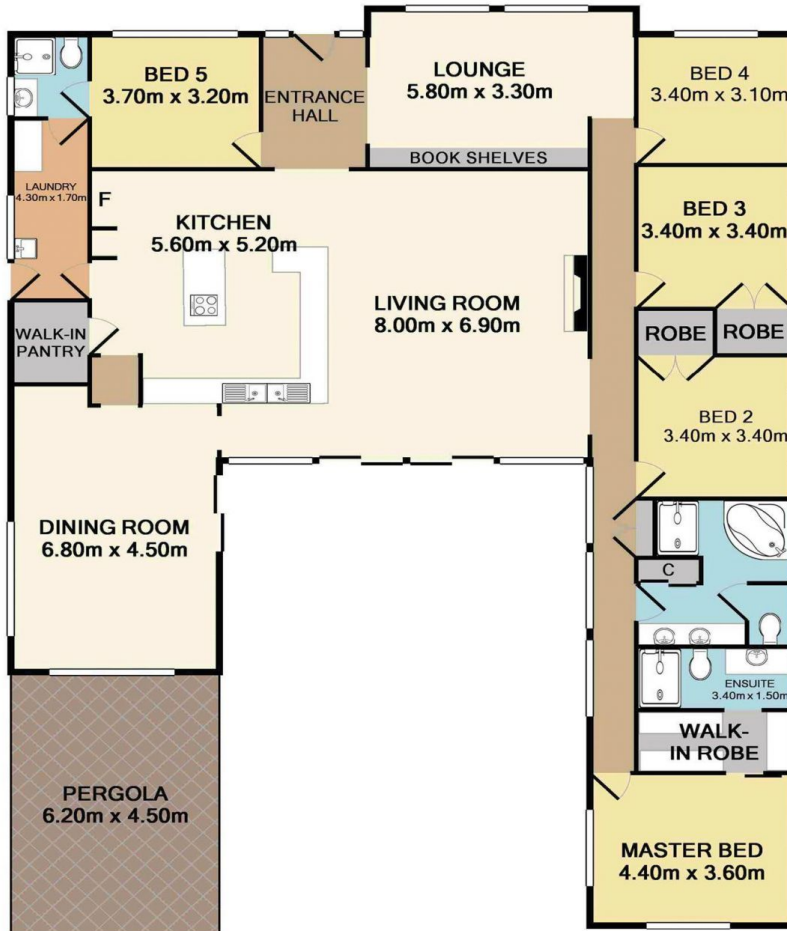
Dooralong

Boundaries are approximate



firstnational  
REAL ESTATE

Coastwide



**Total Approx. Floor Area 457.2 SQ.M. 4921 SQ.FT.**

Measurements are approximate. Not to scale. For illustrative purposes only.

**320 Smiths Road**

**Dooralong**

Boundaries are approximate