






360 Bruce Crescent WALLARAH NSW

4  2  3 

Set on 5 acres and located only a few minutes drive to the M1 Motorway, Warnervale Train Station, shops, schools and the developing Warnervale Town Centre this delightful acreage offers the perfect rural lifestyle with the convenience of being close to town.

The spacious single storey home offers 4 generous bedrooms with an ensuite and walk in robe to the main.

Ample living space includes a large lounge featuring a fireplace and a/c. Open plan dining and family room off the gourmet kitchen with stone bench tops and a huge walk in pantry.

2 separate entertaining areas at the side and rear of the home offer alfresco entertaining for all seasons.

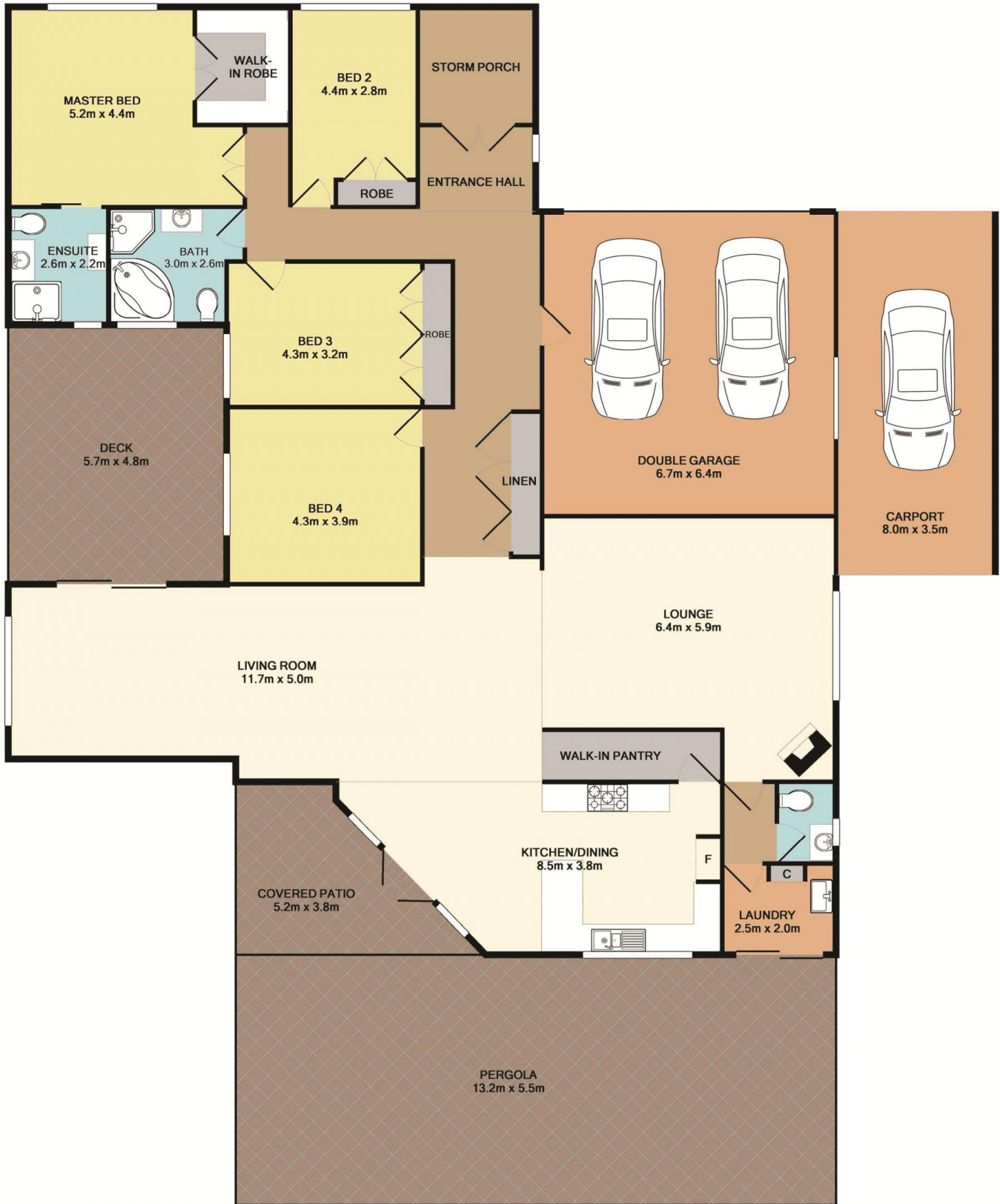
Price : \$ 1,250,000
Land Size : 20234.3 sqm
View : <https://www.coastwidefn.com.au/sale/nsw/central-coast-region/wallarah/residential/acreagesemirural/5623551>



Adrian Simpson
02 4353 1999

<https://www.coastwidefn.com.au>

We sell, rent and manage Real Estate, Residential, Lifestyle and Commercial across the Central Coast



Total Approx. Floor Area 321.4 SQ.M. 3459 SQ.FT.

Measurements are approximate. Not to scale. For illustrative purposes only.

360 Bruce Crescent

Walarah

Boundaries are approximate



SITE PLAN



Measurements are approximate. Not to scale. For illustrative purposes only.

360 Bruce Crescent

Boundaries are approximate

Wallarah