



### 1592 George Downes Drive Kulnura NSW

5 2 3

Located in the Hinterland of the Central Coast, just 50mins (70km) from Wahroonga and 34mins (34km) to Westfield Tuggerah is this stunning property, known as Radaca Park.

With approximately 80% cleared and usable pasture improved land, made up of eight large fully fenced paddocks suitable for horses plus the remainder of the property is also fully fenced to keep in grazing cattle.

The 4 year old, five bedroom architectural designed home was purpose built in a quiet elevated position to embrace the expansive views. The centrepiece of the home is the spacious open plan kitchen and living area.

The kitchen features all the latest facilities, electric operated cupboard doors, extensive bench top area ideal for entertaining, large 900 mm gas stainless oven, and a dishwasher.

**Land Size** : 558466 sqm  
**View** : <https://www.coastwidefn.com.au/sale/nsw/central-coast-region/kulnura/residential/acrea-gesemirural/5623552>



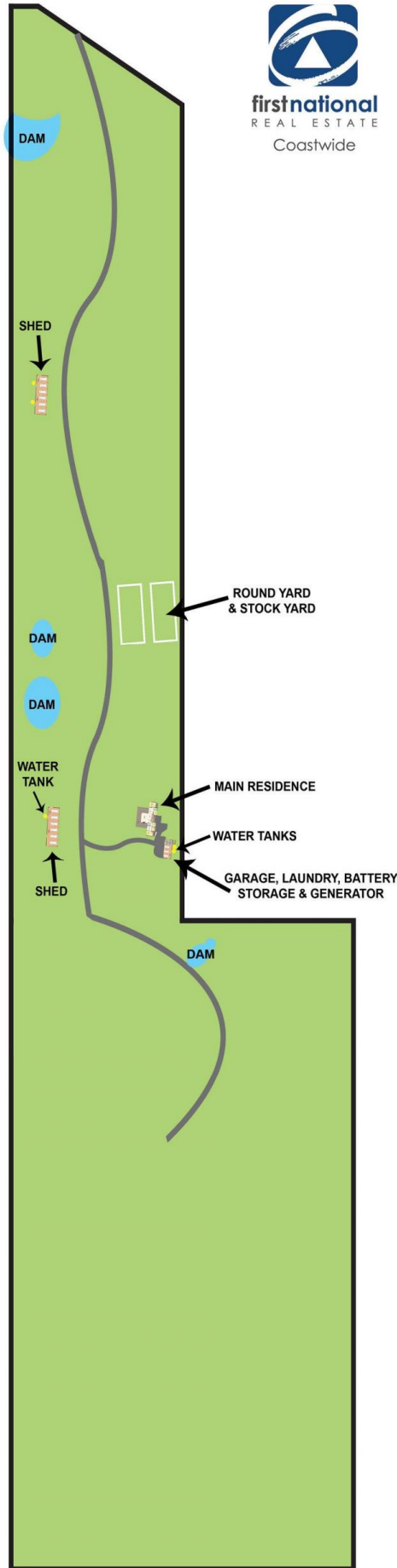
**Michael Eslick**  
0402 810 831

<https://www.coastwidefn.com.au>

We sell, rent and manage Real Estate, Residential, Lifestyle and Commercial across the Central Coast



firstnational  
REAL ESTATE  
Coastwide



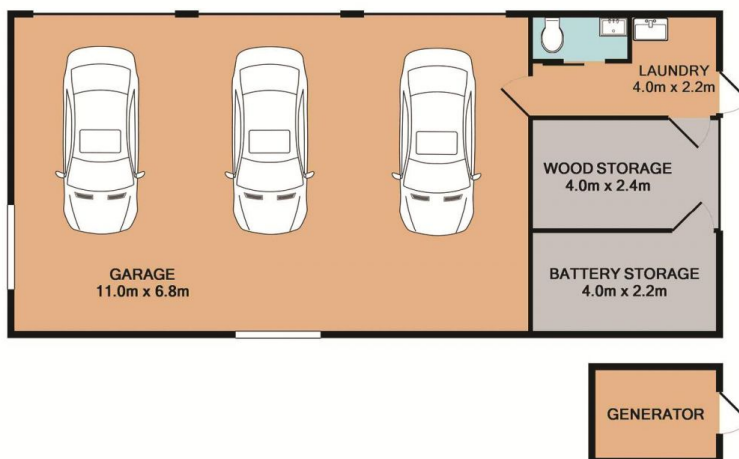
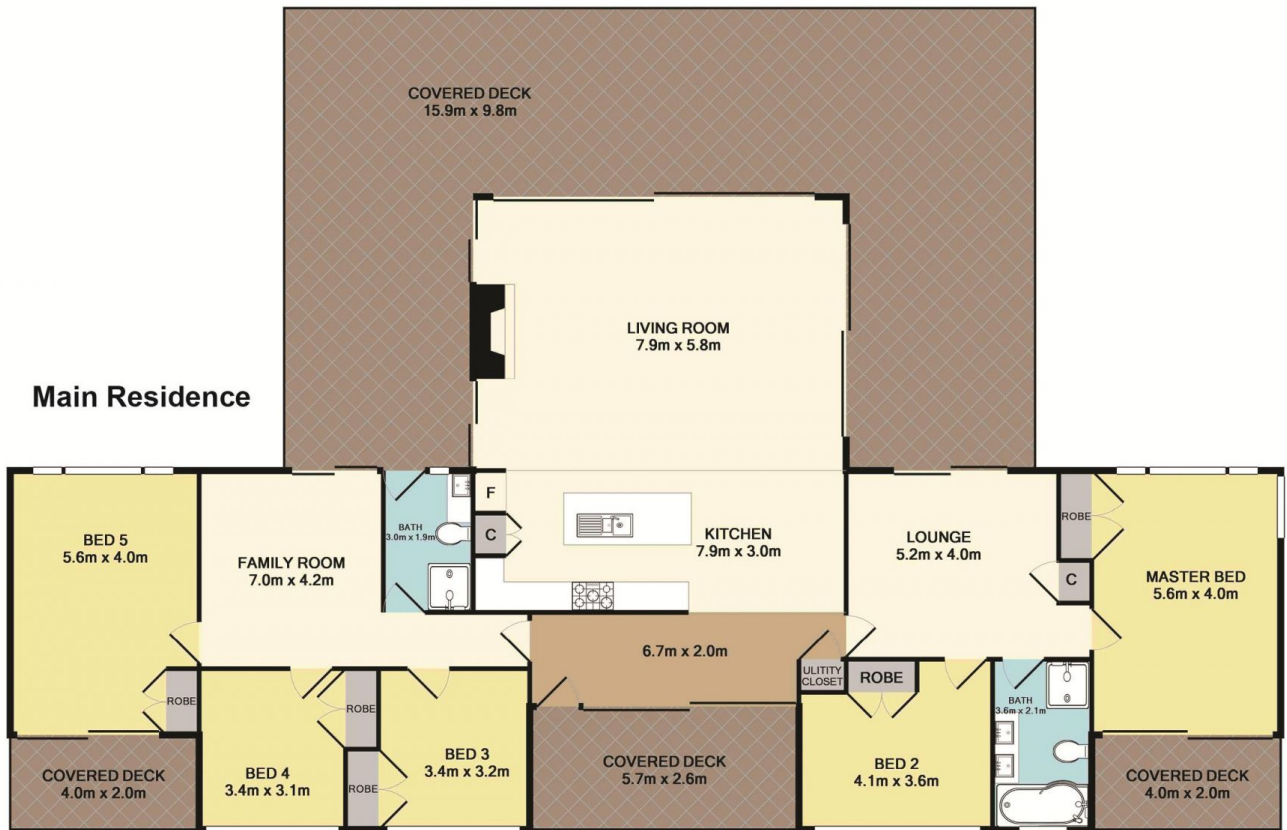
Measurements are approximate. Not to scale. For illustrative purposes only.

1592 George Downes Drive

Kulnura

Boundaries are approximate





**Total Approx. Floor Area 326.8 SQ.M. 3518 SQ.FT.**

Measurements are approximate. Not to scale. For illustrative purposes only.

**1592 George Downes Drive**

Boundaries are approximate

**Kulnura**