



34 Melbourne Road WADALBA NSW

4 2 2

Set in a growing new area and only 2 years old this delightful property will make an ideal home or investment.

This lovely home presents like new and features 4 good sized bedrooms all with robes and an ensuite and walk in robe to the main. The comfortable space areas include an open plan lounge and dining room off the stylish modern kitchen that opens onto the covered alfresco entertaining area.

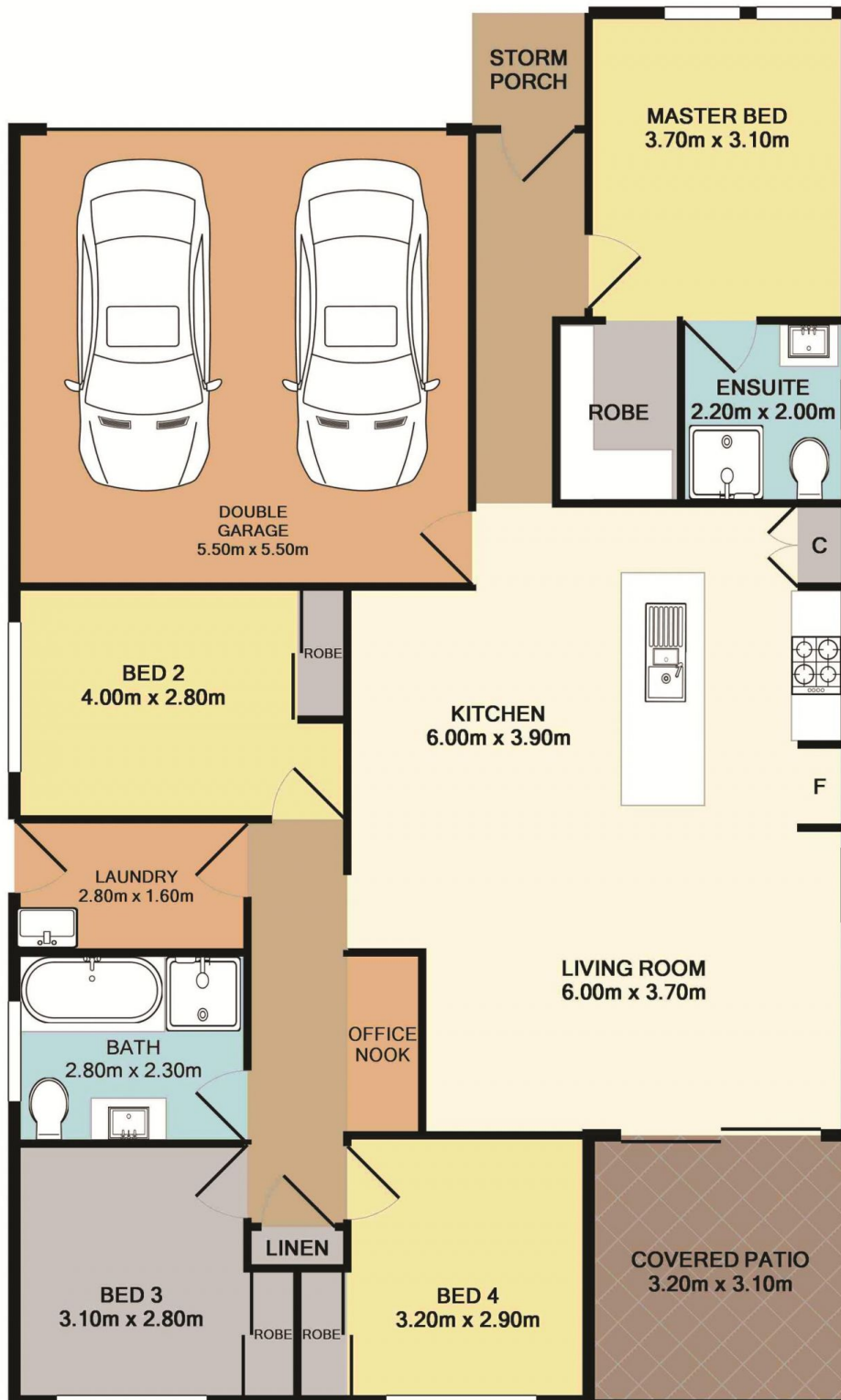
Complete with a double garage with auto door, air conditioner, water tank, and a fully fenced backyard, this home is ready to move in to.

Investors can expect a return of \$500.00 - \$510.00 per week.

Price : \$ 600,000
Land Size : 487 sqm
View : <https://www.coastwidefn.com.au/sale/nsw/central-coast-region/wadalba/residential/house/5623556>



Adrian Simpson
02 4353 1999



Total Approx. Floor Area 149.5 SQ.M. 1609 SQ.FT.

Measurements are approximate. Not to scale. For illustrative purposes only.

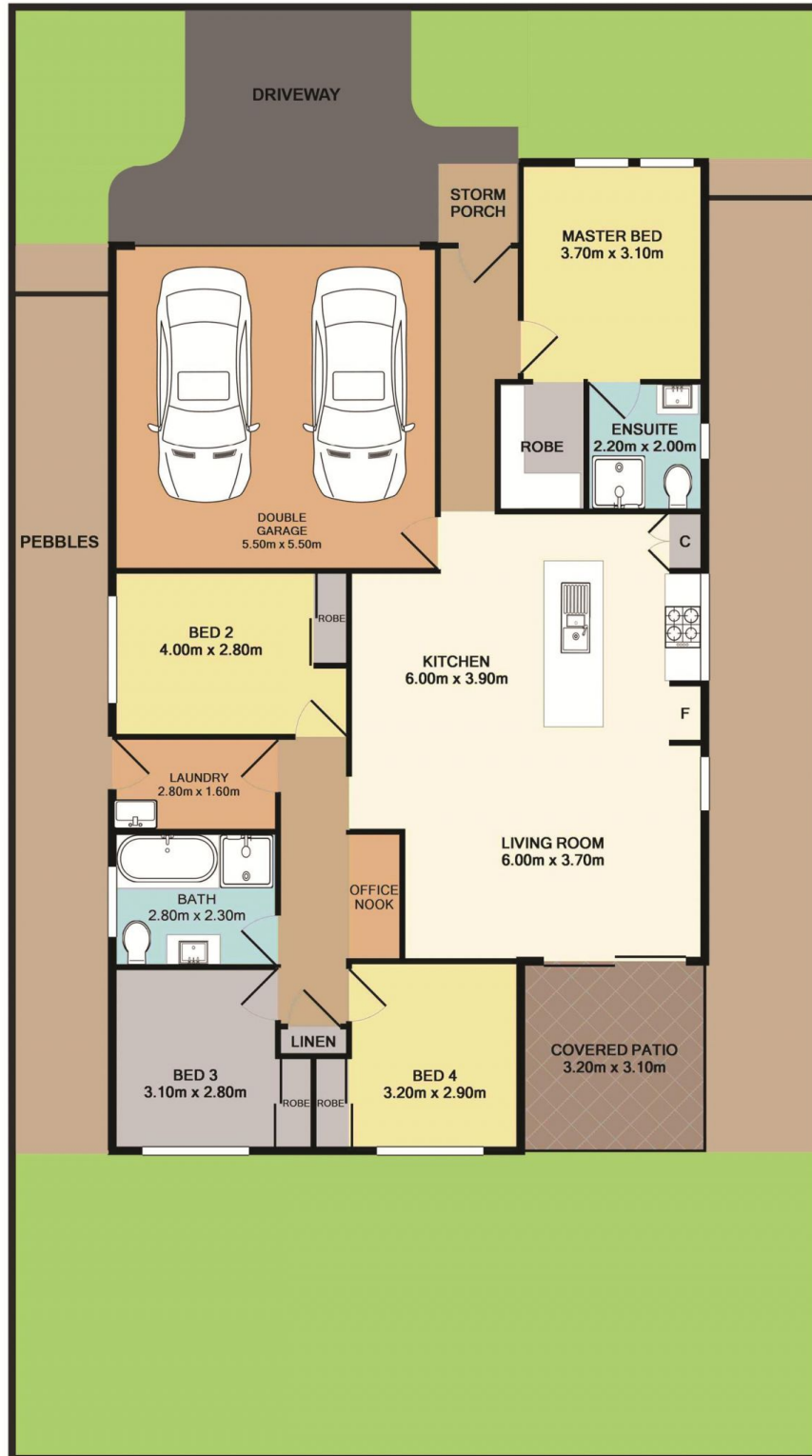
34 Melbourne Road

Wadalba

Boundaries are approximate



SITE PLAN



Measurements are approximate. Not to scale. For illustrative purposes only.

34 Melbourne Road

Wadalba

Boundaries are approximate