






**1281 Wisemans Ferry Road SOMERSBY NSW**

**5**  **3**  **8** 

Set on almost five acres in the sought after area of Somersby, this property offers a country style cottage and separate guest accommodation which are set in a peaceful haven of landscaped gardens surrounded by jacarandas, giant camellias and flame trees.

The main home features three bedrooms, a cosy country style kitchen and comfortable living space that opens to the pool and undercover entertaining area. A large combustion fireplace keeps you warm in winter while air conditioning provides relief from the summer heat.

The separate self-contained guest accommodation offers 2 bedrooms with a kitchen, bathroom, combustion fireplace and generous living space that also opens to the entertaining and pool area.

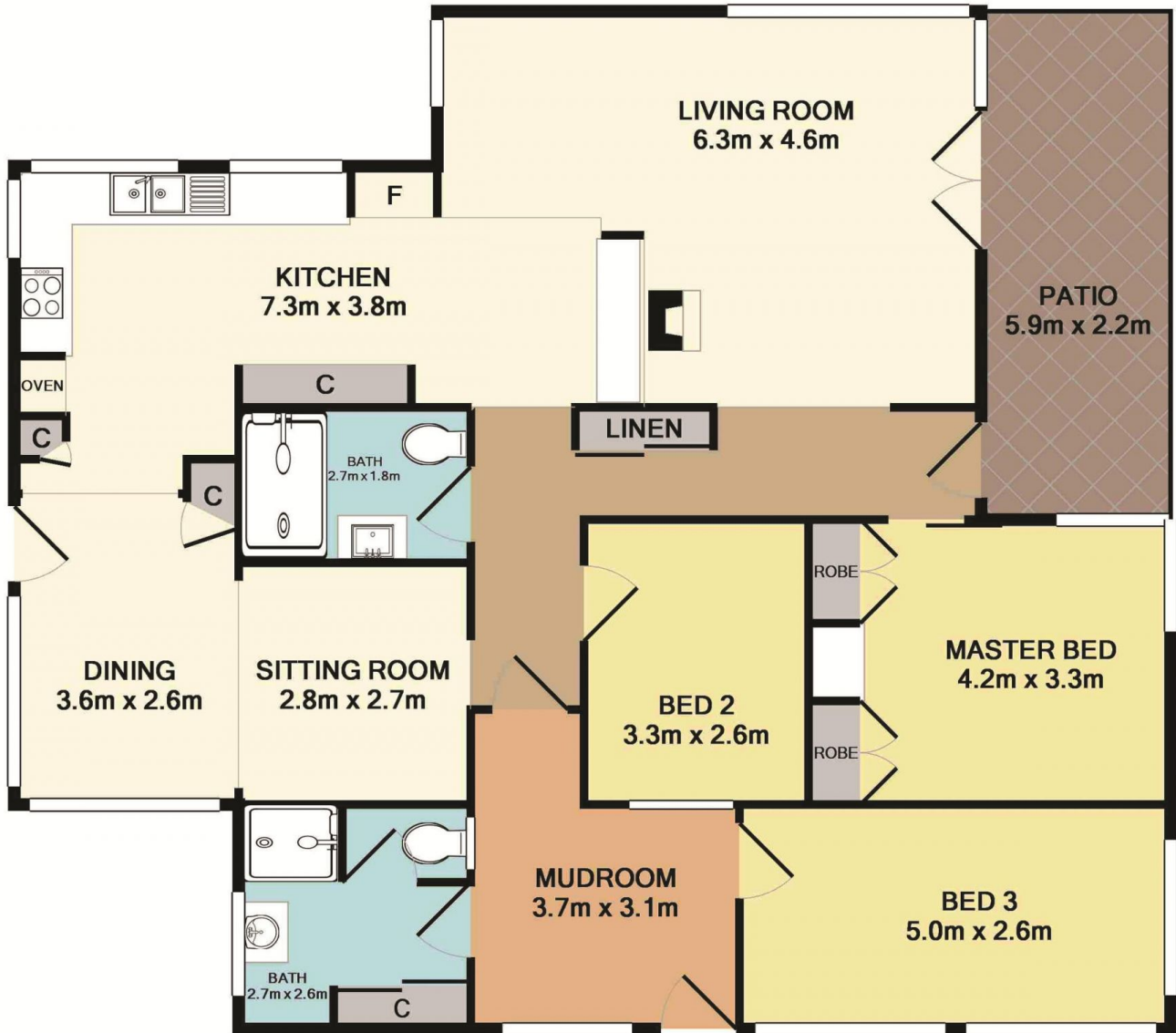
**Price** : \$ 1,225,000  
**Land Size** : 19020.2 sqm  
**View** : <https://www.coastwidefn.com.au/sale/nsw/central-coast-region/somersby/residential/acragesemirural/5623557>



**Michael Eslick**  
**0402 810 831**

<https://www.coastwidefn.com.au>

We sell, rent and manage Real Estate, Residential, Lifestyle and Commercial across the Central Coast



**Total Approx. Floor Area 127.5 SQ.M. 1373 SQ.FT.**

Measurements are approximate. Not to scale. For illustrative purposes only.

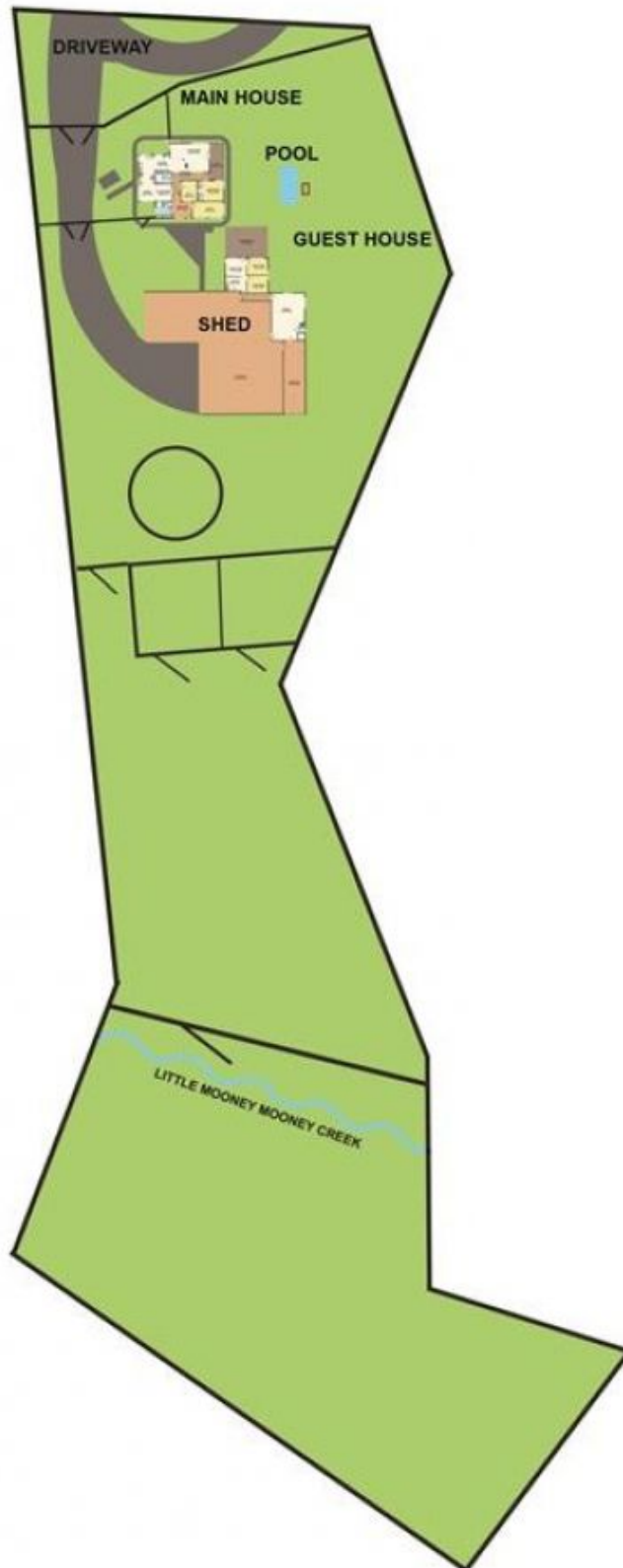
**1281 Wisemans Ferry Road**

Boundaries are approximate

**Somersby**



**SITE PLAN**



---

1281 Wisemans Ferry Road

Boundaries are approximate

Somersby