



478 Yarramalong Road WYONG CREEK NSW

4 🏠 3 🚗 6 🚗

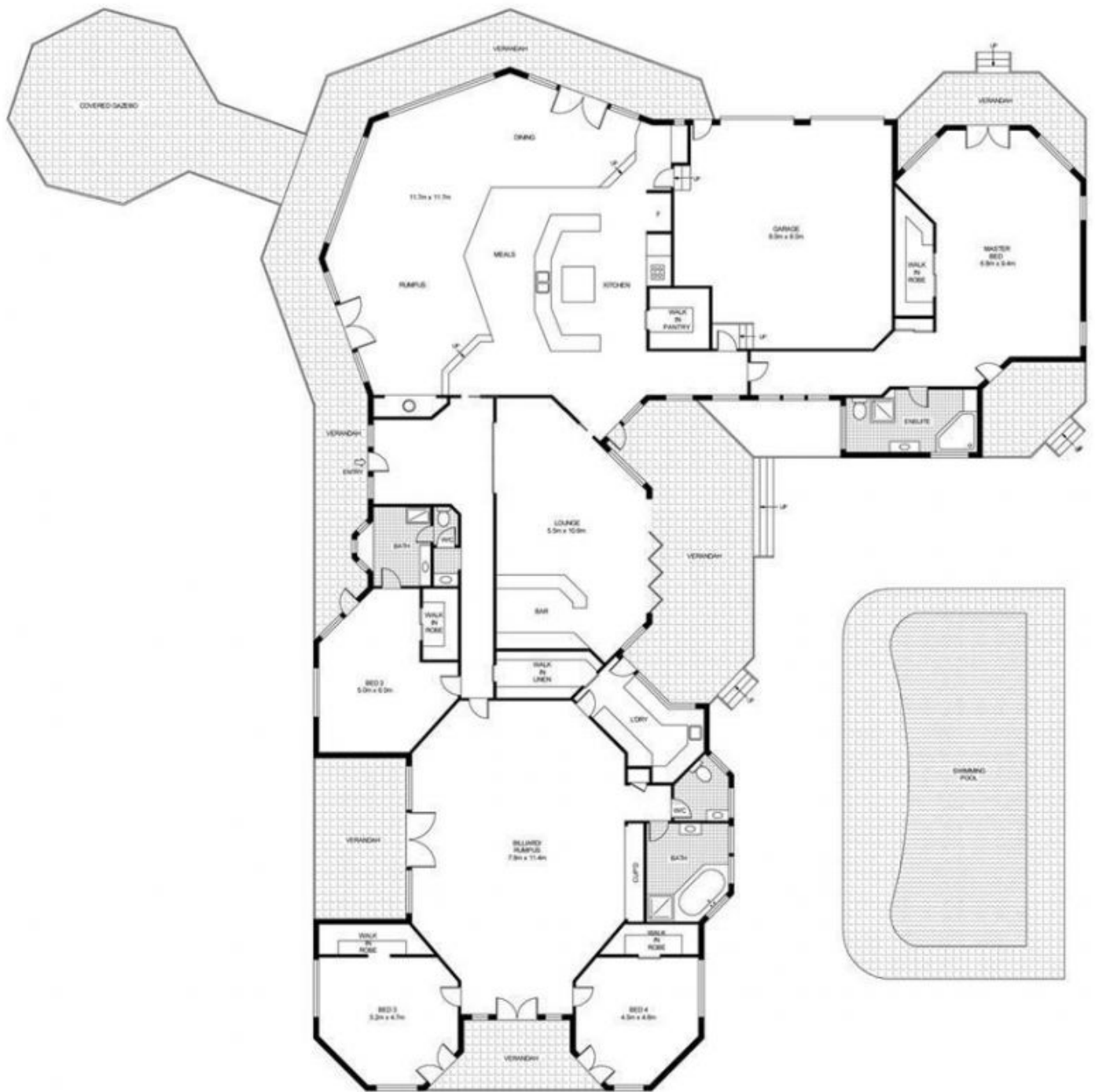
This stunning residence on approx 45 acres in the picturesque Yarramalong Valley enjoys a sundrenched north/east aspect and complete privacy. Flanked by a mountain stream and close proximity to the Ourimbah State Forest with riding trails.

Land Size : 186074 sqm
View : <https://www.coastwidefn.com.au/sale/nsw/central-coast-region/wyong-creek/residential/rural/5623845>

Elevated to capture the breath taking views of the countryside below & accessed by a treelined driveway, the homestead comprises of three entertainer sized living rooms including a billiard room. A beautiful kitchen with views from every window, huge entertaining verandah, separate bar & master bedroom with new ensuite and walk in robe, three further bedrooms, two bathrooms, air conditioning and all the trimmings you would expect. Complimented by a large swimming pool, machinery shed, landscaped gardens and located less than 10 minutes to Westfield, rail and 45 minutes to Wahroonga.

<https://www.coastwidefn.com.au>

We sell, rent and manage Real Estate, Residential, Lifestyle and Commercial across the Central Coast



GROUND FLOOR PLAN



478 YARRAMALONG ROAD, WYONG CREEK

Disclaimer: This information has been provided to us from the vendor and or their conveyancer or solicitor, no guarantee is given in respect of its accuracy. Any person viewing this information should make their own enquiries and only rely on those enquiries.



**first
national**
REAL ESTATE

Total Approximate Area : 753 sq.m.