



96 Pacific Highway Wyong NSW

\$3,740 PER MONTH INCLUDING GST & OUTGOINGS

This terrific office space has just become available in the center of Wyong opposite Wyong Rail Station.

Air conditioned offices with parking, consisting of reception/waiting area, multiple offices, lunchroom, disabled access & disabled toilet.

Great signage exposure for your business & ready to walk into & start.

If additional space is required, there is currently available, some area upstairs.

Call Chris Manuelle for an inspection today.

Building Size : 160 sqm
Land Size : 160 sqm
View : <https://www.coastwidefn.com.au/lease/nsw/central-coast-region/wyong/commercial/offices/5624065>

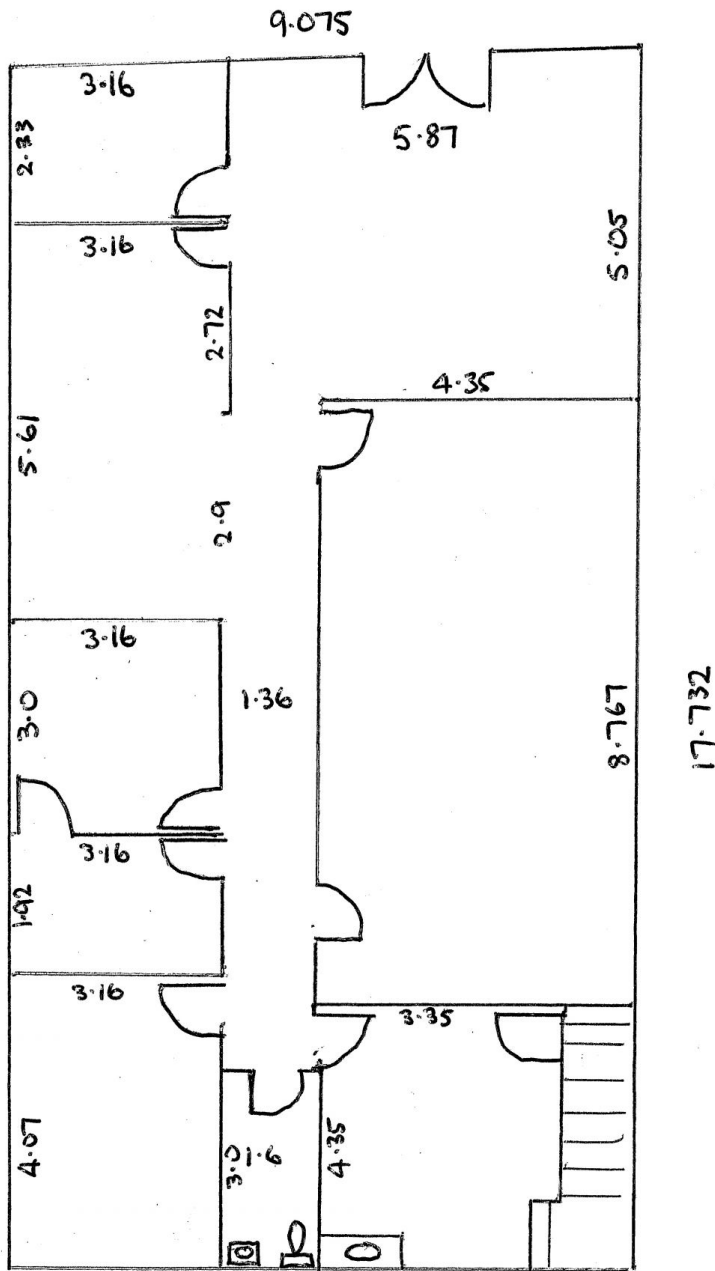


Chris Manuelle
0412 133 143

<https://www.coastwidefn.com.au>

We sell, rent and manage Real Estate, Residential, Lifestyle and Commercial across the Central Coast

96 PACIFIC HWY WONGA



160²m.

5x AIR COND UNITS.

100mm PARTITION WALLS