



**16A Platypus Road Berkeley Vale NSW**

2 1 1

Staying in touch with changing trends and modern style living, this brand new 2-bedroom granny flat compliments the block and flows seamlessly, maximizing space, functionality and privacy.

**View** : <https://www.coastwidefn.com.au/lease/nsw/central-coast-region/berkeley-vale/residential/house/5624119>

A practical and affordable option offering;

- ? Generous size kitchen with stainless steel appliances, gas cooking and dishwasher
- ? Open plan living space with ceiling fan, tasteful décor and colours + air conditioning
- ? Good size bedrooms with quality carpet, double mirror built in robes + ceiling fans
- ? Combined modern bathroom/laundry
- ? Sun drenched front verandah space
- ? Supersized carport + garden shed for storage space
- ? Walk to bike/walking path along Tuggerah Lakes and



**firstnational**  
REAL ESTATE

Coastwide

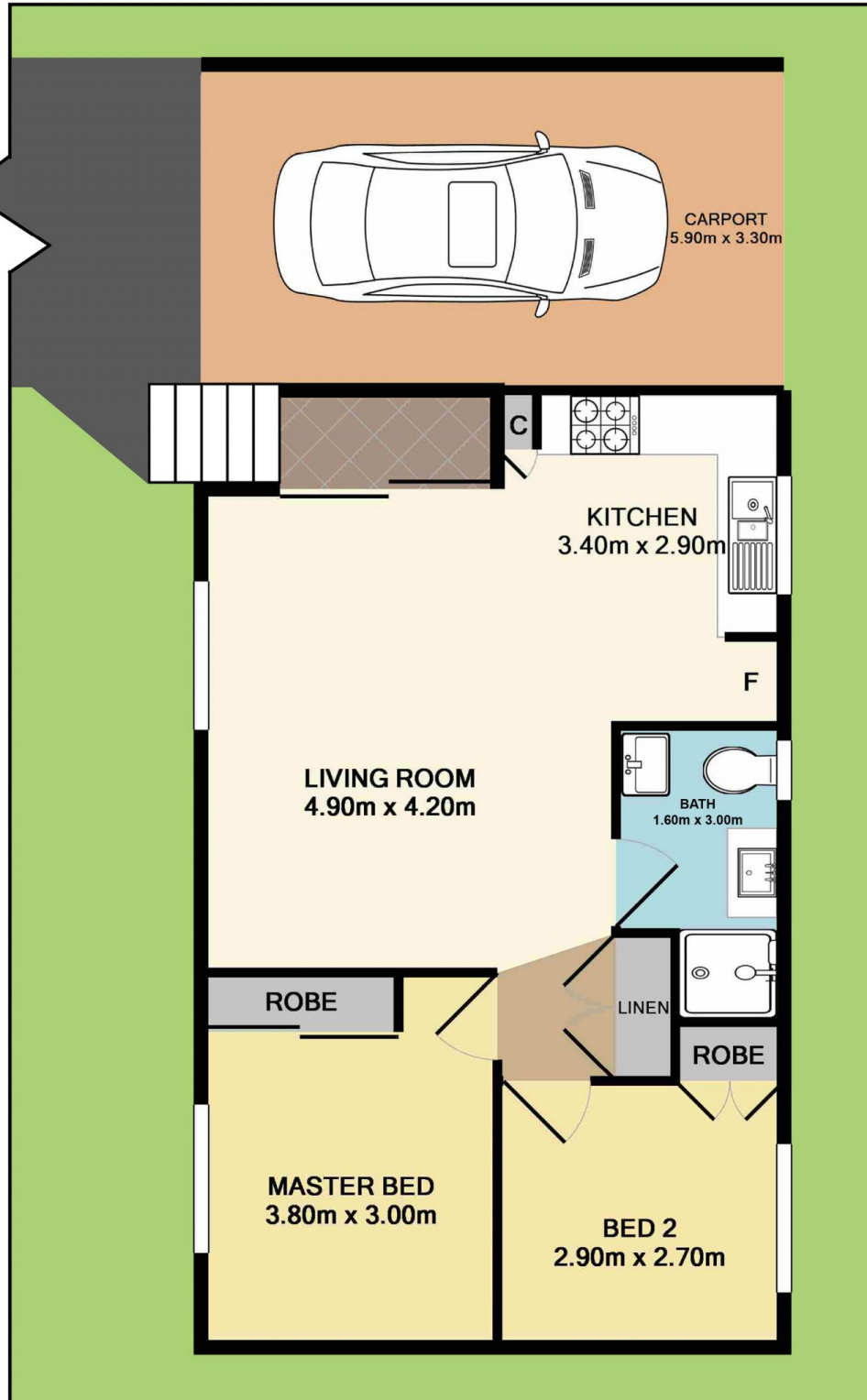
**Property Management**  
**02 4353 1999**

<https://www.coastwidefn.com.au>

We sell, rent and manage Real Estate, Residential, Lifestyle and Commercial across the Central Coast



30.7m TO ROAD



Total Approx. Floor Area 73.7 SQ.M. 793 SQ.FT.

Measurements are approximate. Not to scale. For illustrative purposes only. Boundaries are approximate.