



22 Woodbury Park Drive Mardi NSW

4 2 2

Enjoy the extra pleasures this beautiful large family home has to offer located in a very sought after location in Mardi, only a minutes drive to freeway access and walking distance to Westfield Tuggerah shops and train station. Features include - 4 generous sized bedrooms all with built in robes, ensuite and WIR to master bedroom, large 3-way bathroom, new quality carpet throughout, recently renovated bathroom and ensuite, ducted air conditioning, ceiling fans, formal living and dining rooms, kitchen with gas cooking + dishwasher. DLUG with remote door and internal access. Rear covered entertaining area overlooking landscaped grounds and fully fenced yard.

Sorry, no pets allowed.

INSPECTIONS ARE SUBJECT TO CHANGE!
PLEASE CONFIRM INSPECTIONS PRIOR TO THE

View : <https://www.coastwidefn.com.au/lease/nsw/central-coast-region/mardi/residential/house/5624252>



firstnational
REAL ESTATE

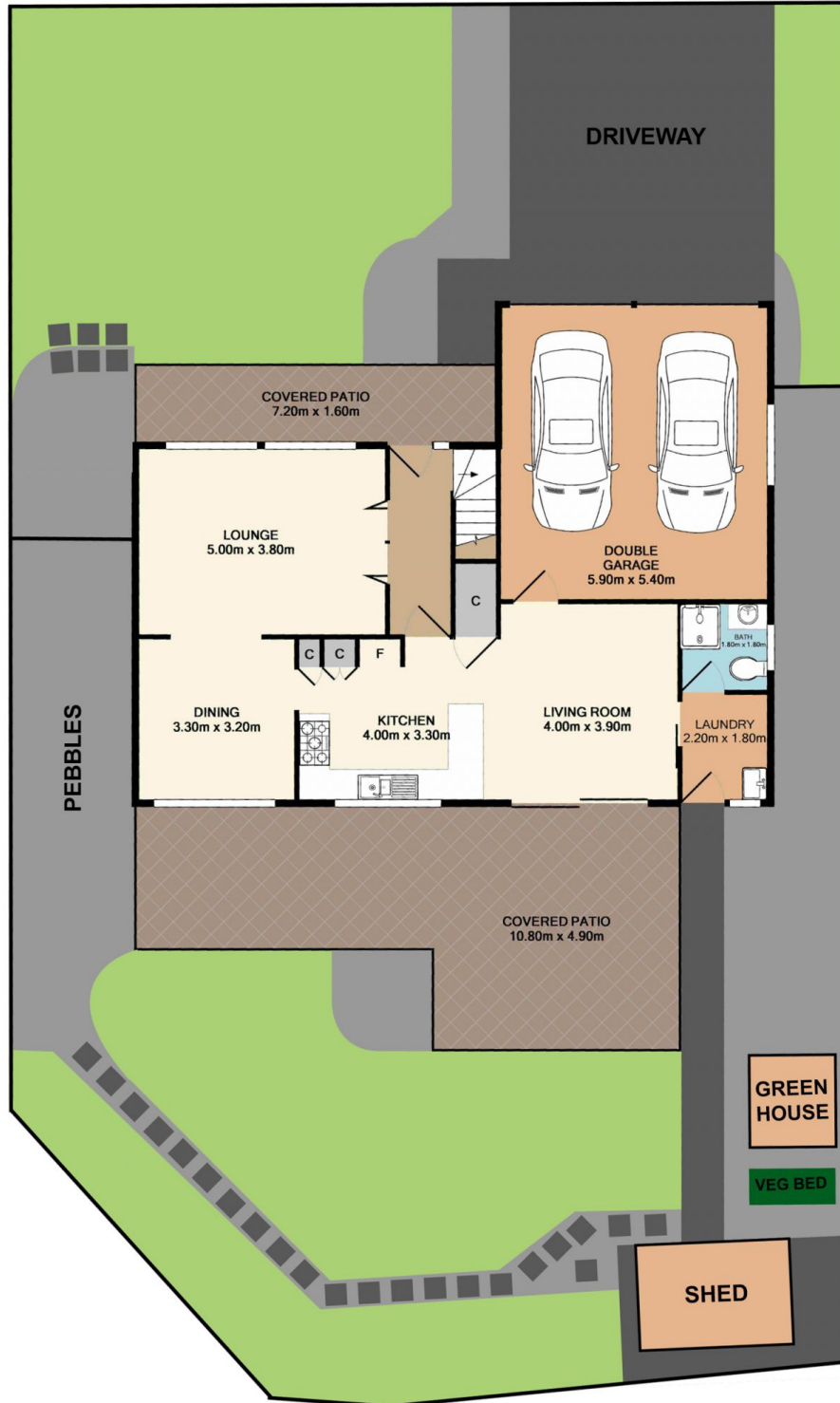
Coastwide

Property Management
02 4353 1999

<https://www.coastwidefn.com.au>

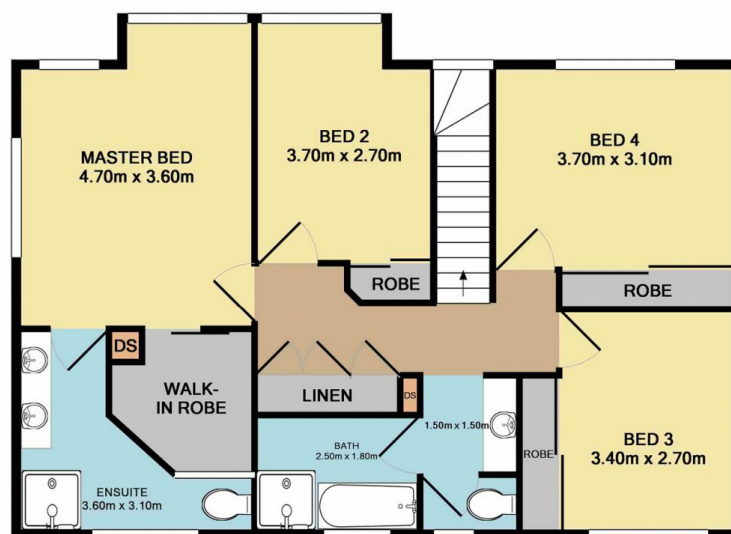
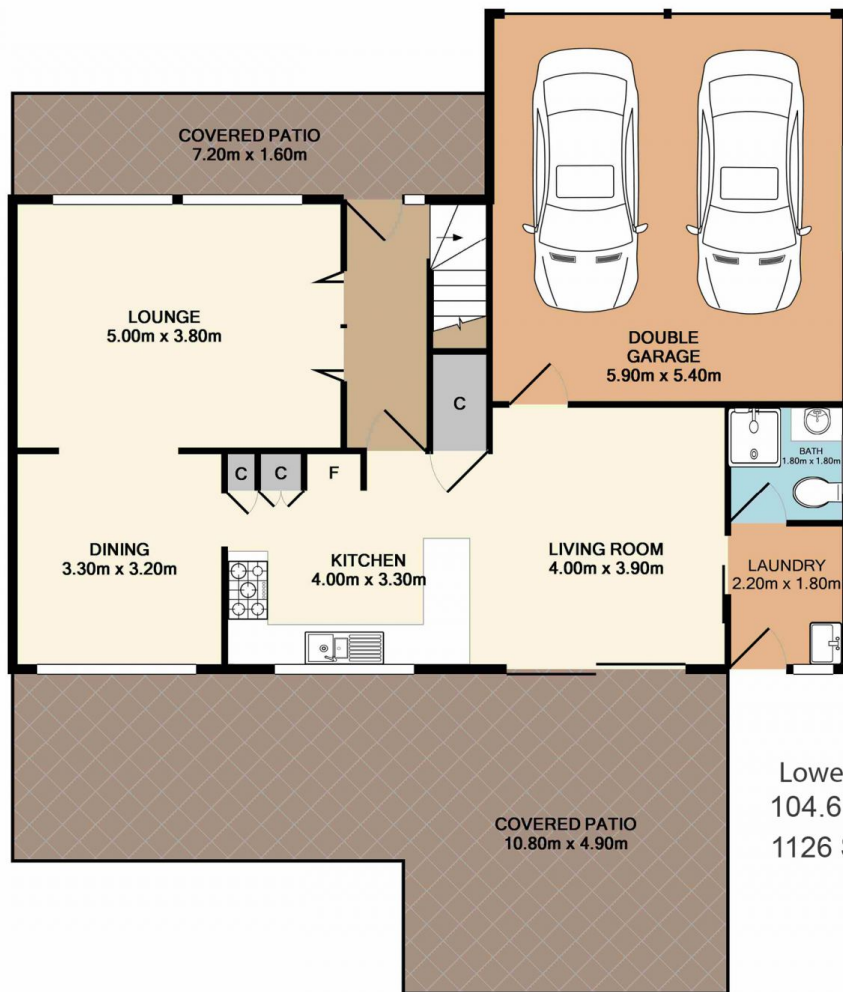
We sell, rent and manage Real Estate, Residential, Lifestyle and Commercial across the Central Coast

SITE PLAN





22 Woodbury Park Drive, Mardi



Total Approx. Floor Area 184.8 SQ.M. 1989 SQ.FT.

Measurements are approximate. Not to scale. For illustrative purposes only. Boundaries are approximate.