



130 Durren Road Jilliby NSW

4 2 2

Set on 3.2 acres (approx.) in a stunning rural landscape this is the perfect sized lifestyle property. Boasting a lovely 4 bedroom country style home and located in the highly sought after postcode of Jilliby, it is only 15 minutes to the M1 Motorway access, Westfield Tuggerah and Train station.

Price : \$ 1,720,000
Land Size : 3.26 Acres
View : <https://www.coastwidefn.com.au/sale/nsw/central-coast-region/jilliby/residential/acreage-semirural/6743002>

The well-designed family home has been built with both comfort and family life in mind. Be impressed with the functional floorplan that offers 4 generous sized bedrooms, two bathrooms, open plan living spaces as well as a stylish modern kitchen with walk-in pantry.

The home is complete with a double garage, internal laundry and ducted air-conditioning, ensuring your comfort all year round.



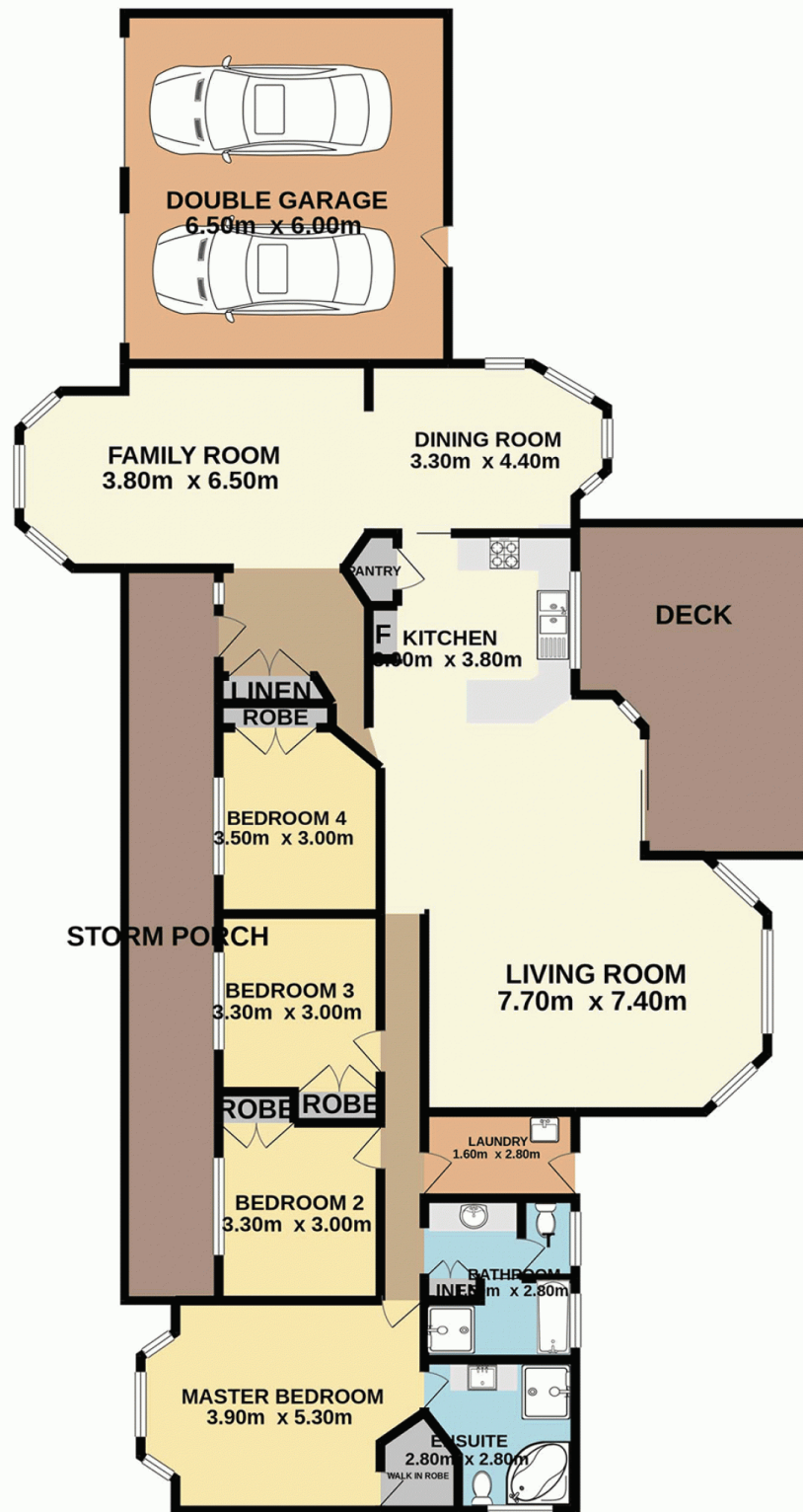
David Want
0402 810 831



Skye Le Marseny
0403 271 122



130 Durren Road, Jilliby



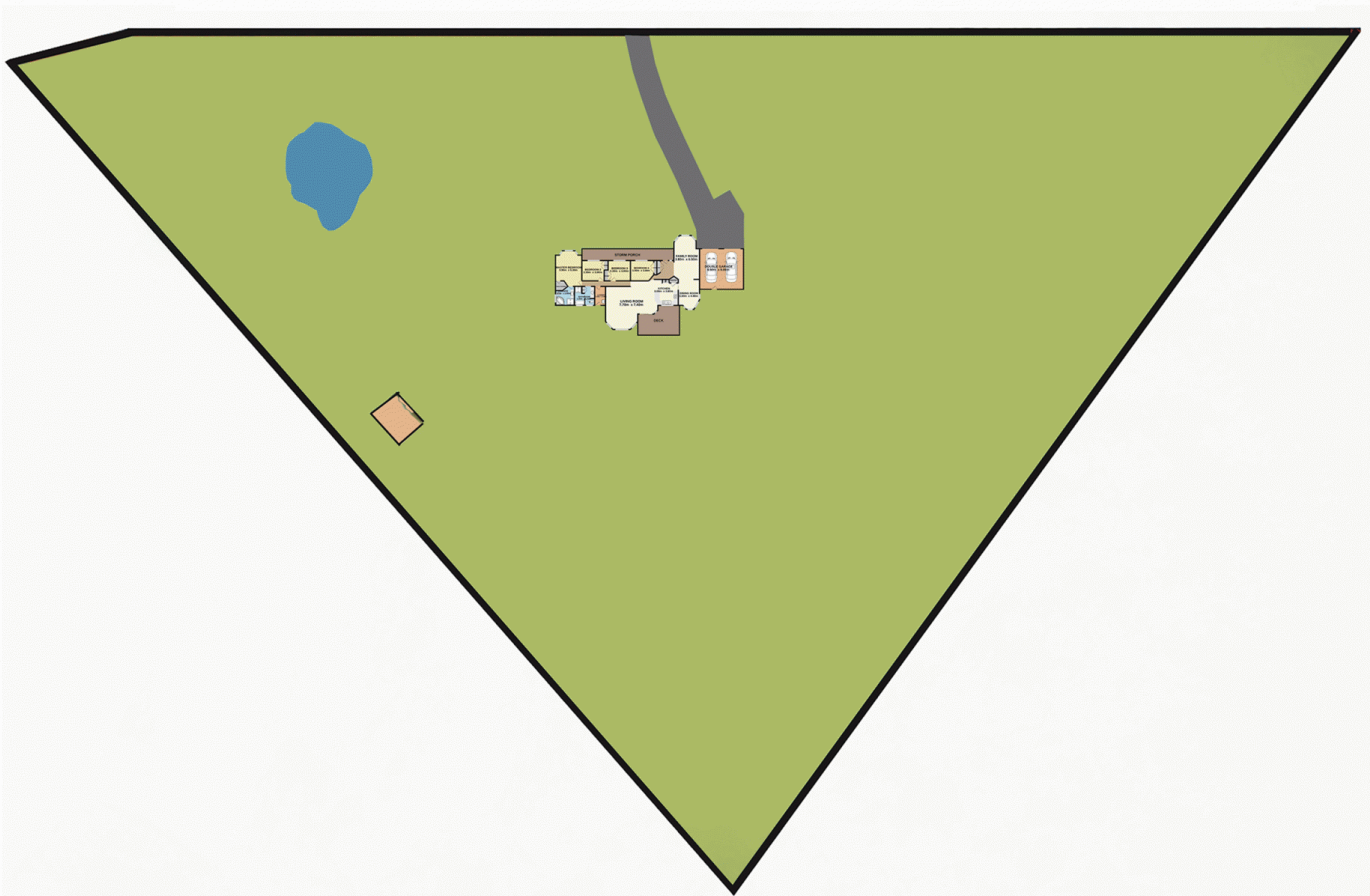
Total Approx. Floor Area 216.9 SQ.M.

Measurements are approximate. Not to scale. For illustrative purposes only. Boundaries are approximate.



130 Durren Road, Jilliby

SITE PLAN



Measurements are approximate. Not to scale. For illustrative purposes only. Boundaries are approximate.