






182 Woodbury Park Drive Mardi NSW

4  2  2 

Immaculately maintained, this spacious single-storey home enjoys an ideal location, a comfortable floor plan and will appeal to both the home buyer and investor.

Located within a short drive to Westfield Shopping Centre, Tuggerah Train Station and the M1 Motorway, this delightful home offers 4 bedrooms with an en-suite & walk-in robe to the main. The generous living space includes a spacious formal lounge and dining room as well as a family room off the well-appointed kitchen.

The home is complimented by a covered outdoor entertaining area, double garage with internal access and a private fully fenced yard.

Recently updated with fresh paint, floor coverings and stone benchtops in the kitchen the home is complete with a

Price : \$ 855,000
Land Size : 553.1 sqm
View : <https://www.coastwidefn.com.au/sale/nsw/central-coast-region/mardi/residential/house/7245447>



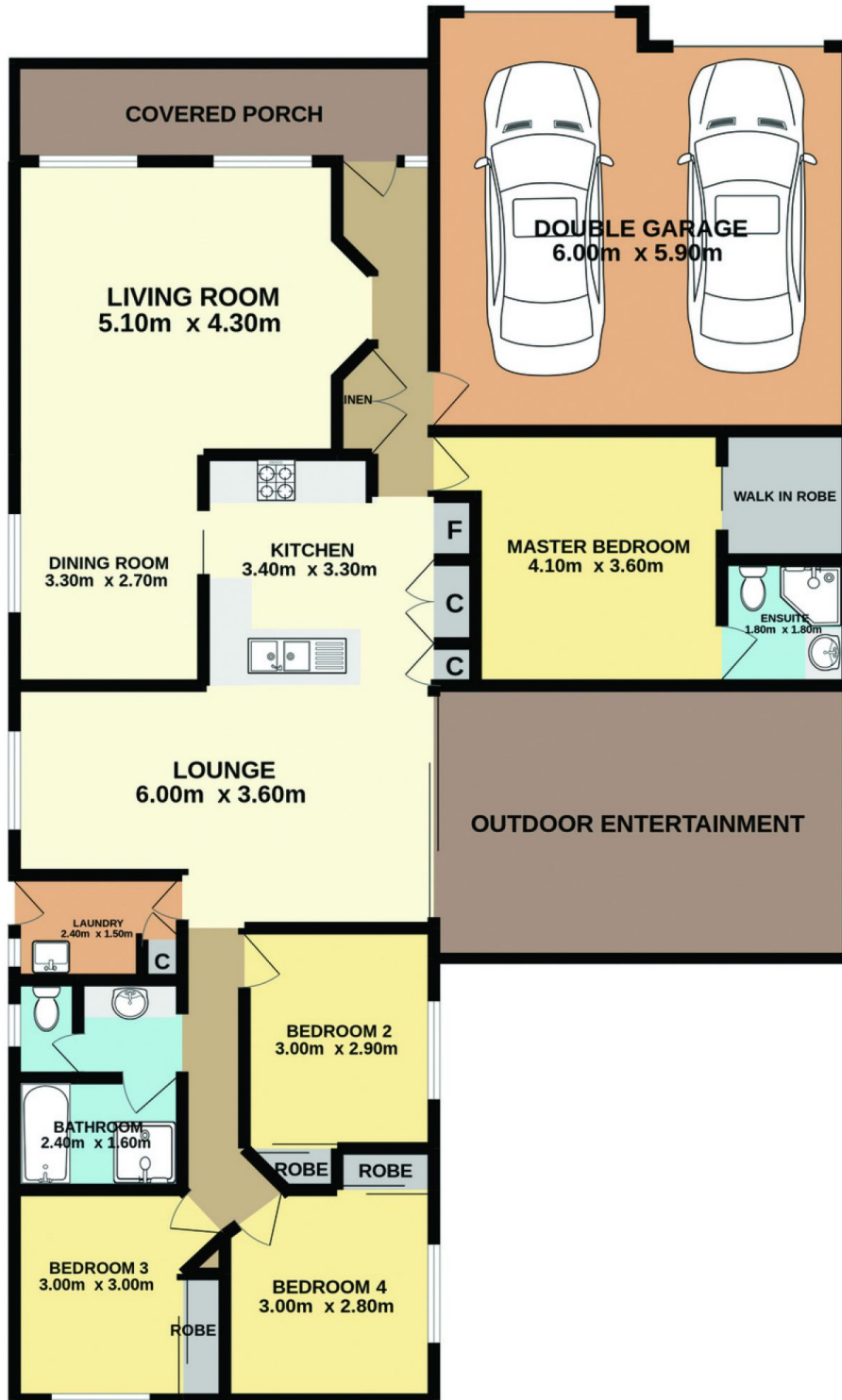
Adrian Simpson
02 4353 1999

<https://www.coastwidefn.com.au>

We sell, rent and manage Real Estate, Residential, Lifestyle and Commercial across the Central Coast



182 Woodbury Park Drive, Mardi



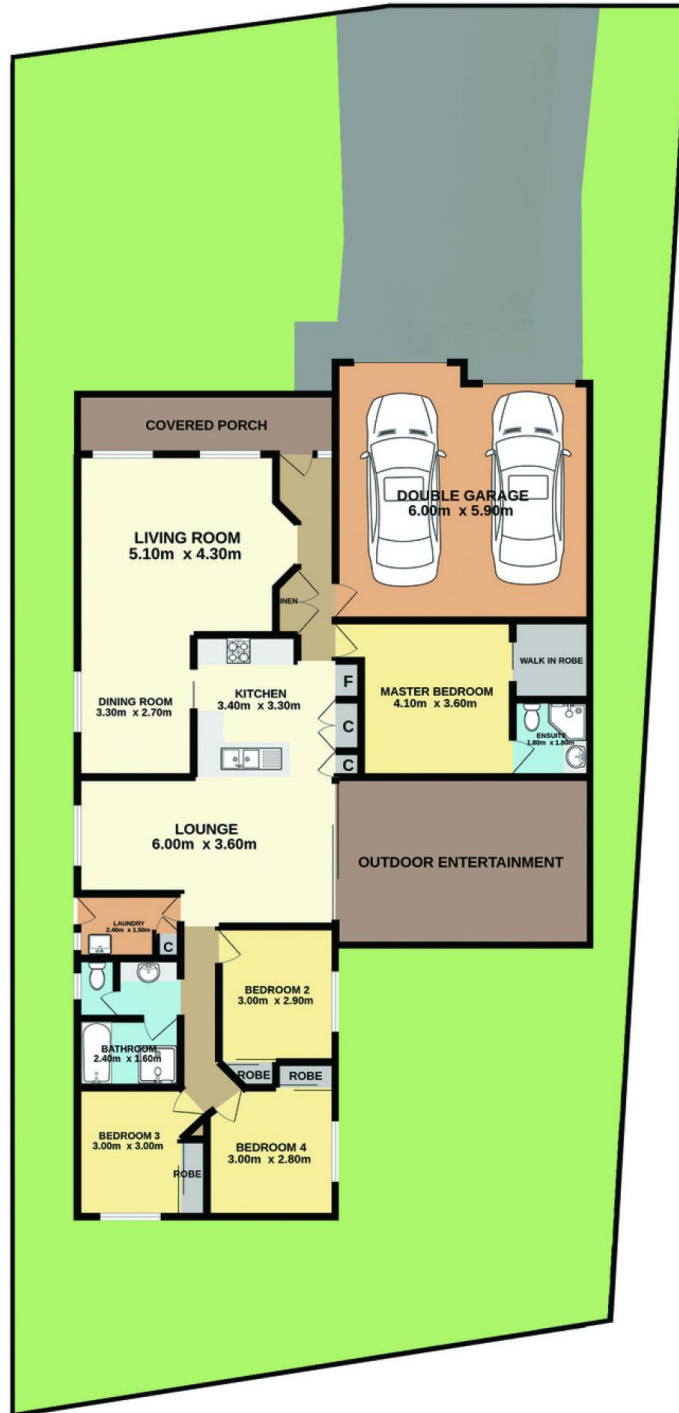
Total Approx. Floor Area

Measurements are approximate. Not to scale. For illustrative purposes only. Boundaries are approximate.



182 Woodbury Park Drive, Mardi

SITE PLAN



Measurements are approximate. Not to scale. For illustrative purposes only. Boundaries are approximate.