




10 Clementine Place Mardi NSW

4  2  2 

A home of this calibre doesn't come along for rent very often. A fantastic opportunity to secure a modern, luxurious, tri level family size home in one of the best, private cul de sac locations within Mardi. Features of the property include -

- 4 good size bedrooms with floorboards throughout and built in robes
- Ensuite and walk in robe to master bedroom
- Chef's heaven kitchen with open plan design, stone bench tops and stainless steel appliances
- Large open plan living and dining space
- Ducted air conditioning
- Additional rumpus room, an ideal play space for the kids + study nook

View : <https://www.coastwidefn.com.au/lease/nsw/central-coast-region/mardi/residential/house/8007433>



firstnational
REAL ESTATE

Coastwide

Property Management
02 4353 1999

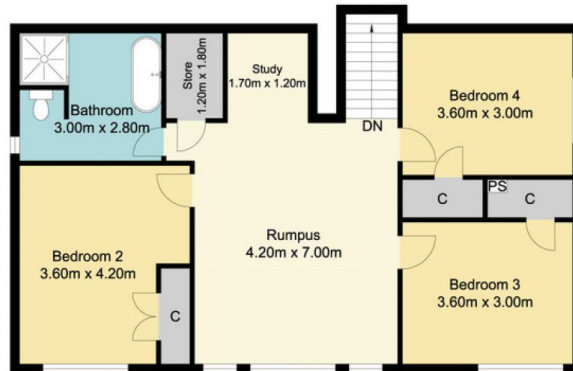


Sarah Davis
02 4353 1999

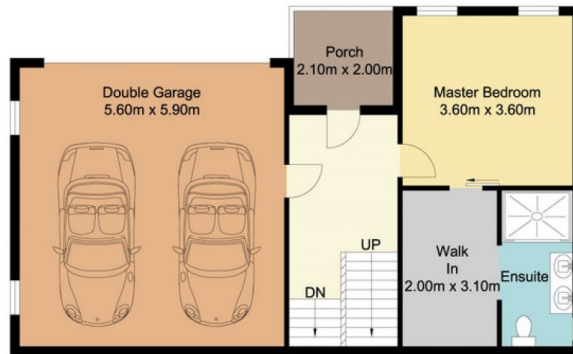
<https://www.coastwidefn.com.au>

We sell, rent and manage Real Estate, Residential, Lifestyle and Commercial across the Central Coast

10 Clementine Place, Mardi



Second Floor



First Floor



Ground Floor

Total Approx Floor Area 233.21 sq.m

Measurements are approximate. Not to scale. For illustrative purposes only. Boundaries are approximate

10 Clementine Place, Mardi

SITE PLAN



Site Plan

Total Approx Floor Area 233.21 sq.m

Measurements are approximate. Not to scale. For illustrative purposes only. Boundaries are approximate