



**1a/8 Bon Mace Close Berkeley Vale NSW**

**2** 

Located in a prominent corner position in Berkeley Vale's industrial area is this spacious showroom with office space.

Set across 2 levels there is a prominent showroom with plenty of window space on the ground floor and large office space with a toilet and kitchenette on the 1st floor.

- ? Rent \$1,950 + GST per month
- ? 20% of Outgoing being Water Usage & Connections \$800 pa, Council Rates \$850pa and Building insurance \$1,700pa
- ? Total floor area is approximately 204m2 (being 109m2 downstairs and 95m2 upstairs)
- ? 2 car spaces

**Type** : Showrooms/Bulky Goods  
**Price** : \$1,950 plus GST + OUTGOINGS pm  
**Land Size** : 204 sqm  
**View** : <https://www.coastwidefn.com.au/lease/nsw/central-coast-region/berkeley-vale/commercial/showroomsbulky-goods/8140707>

[For full version visit the website](https://www.coastwidefn.com.au)



**Adrian Simpson**  
02 4353 1999

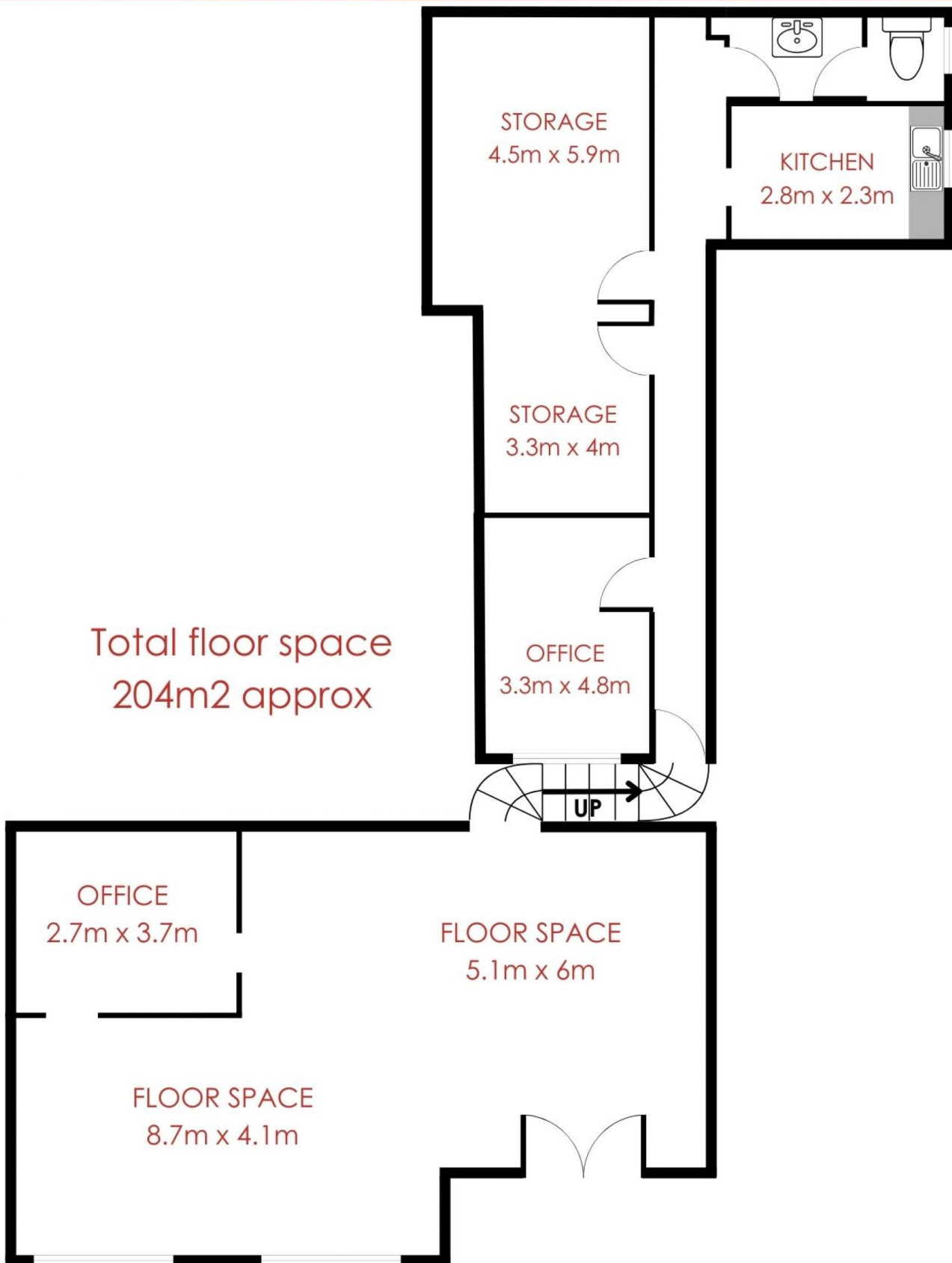


**David Manuelle**  
02 4353 1999

<https://www.coastwidefn.com.au>

We sell, rent and manage Real Estate, Residential, Lifestyle and Commercial across the Central Coast

# 1a/8 Bon Mace Close, Berkeley Vale



Measurements are approximate. Not to scale. For illustrative purposes only. Boundaries are approximate



**firstnational**  
COMMERCIAL | Coastwide